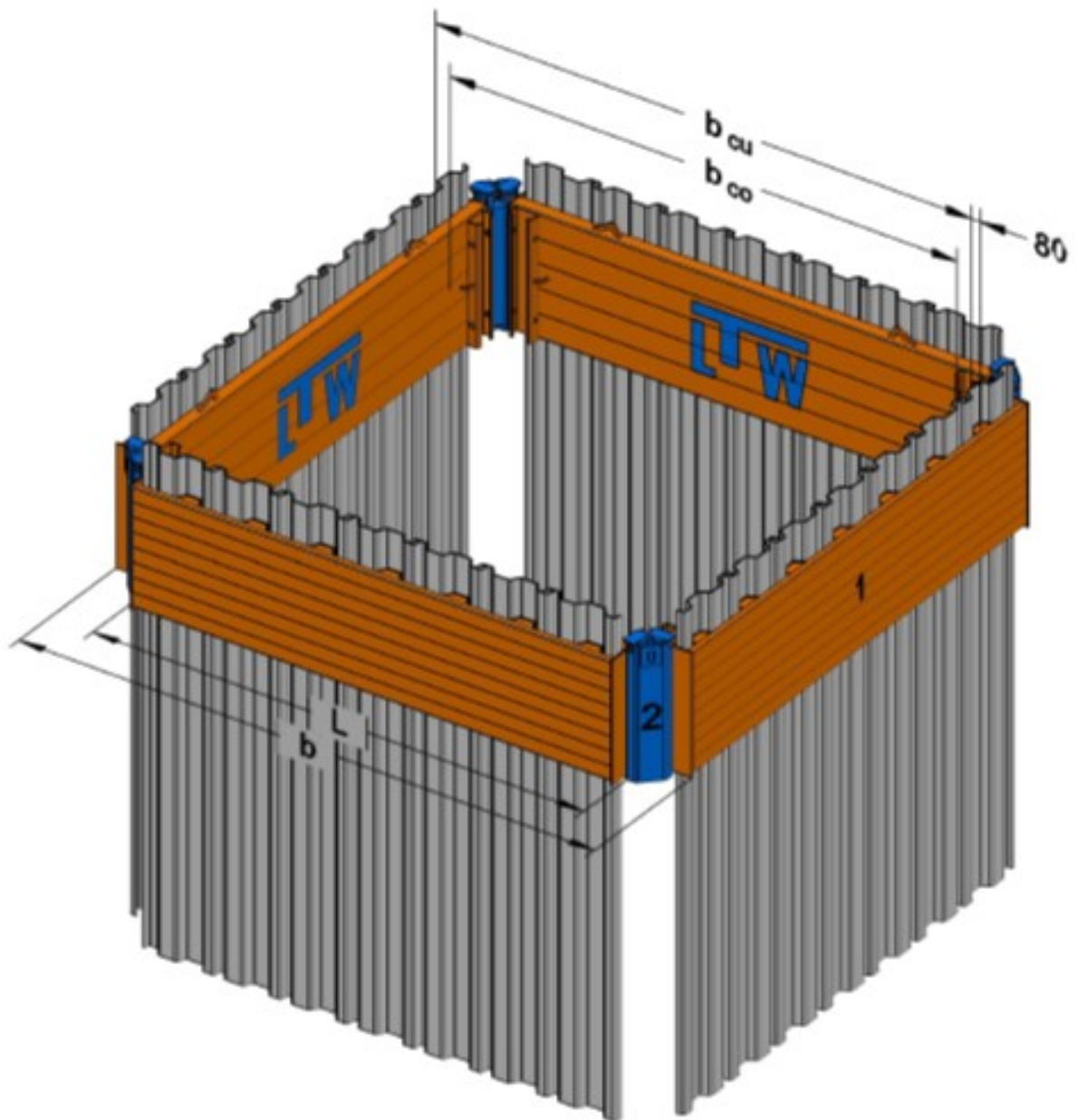


TECHNICAL CHARACTERISTICS

LTW PILE GUIDE BOX with corner connectors



SYSTEM VIEW



1 standard pile guide box
2 corner connector

L plate length
b trench width

b_{co} working width inside plates
 b_{cu} working width between sheets

TECHNICAL CHARACTERISTICS

LTW PILE GUIDE BOX with corner connectors



STANDARD PILE GUIDE BOX $t_{PI-(inner\ Plate)} = 120\text{ mm}$

box with guidance for being used in the slide rail system with sheets type KD 6/8

plate length L [m]	plate height H [m]	working width between		shaft width b [m]	number of trench sheets n per plate	limit state design beam load q_d [kN/m]	plate weight G_{PL} [kg]
		plates b_{co} [m]	sheets b_{cu} [m]				
2,52	1,00	~2,65	~2,89	~3,20	4 * KD6	212,8	680
2,94	1,00	~3,07	~3,31	~3,62	5 * KD6	154,9	780
3,52	1,00	~3,65	~3,89	~4,20	6 * KD6	107,1	905
4,02	1,00	~4,15	~4,39	~4,70	7 * KD6	81,6	1020

TENSILE FORCES

lifting eyes at the plate head $R_d = 229\text{ kN}$

TRENCH SHEETS steel quality S275JRC

KD 6/8



type	width b [mm]	height h [mm]	thickness t [mm]	section modulus W_y [cm ³ /m]	moment of inertia I_y [cm ⁴ /m]	bending moment M_d [kNm/m]	weight single pile [kg/m]	weight Wall [kg/m ²]
KD 6/8	600	80	8	242	969	60,5	50,0	83,3

ACCESSORIES

description	dimension	numbers per shaft	weight [kg/piece]
corner connector	L = 1,10m	4	82
end cap for the above	100*170*82	8	2,1
bolt	Ø20 * 200	8	0,6
locking clip	Ø5	8	0,1

