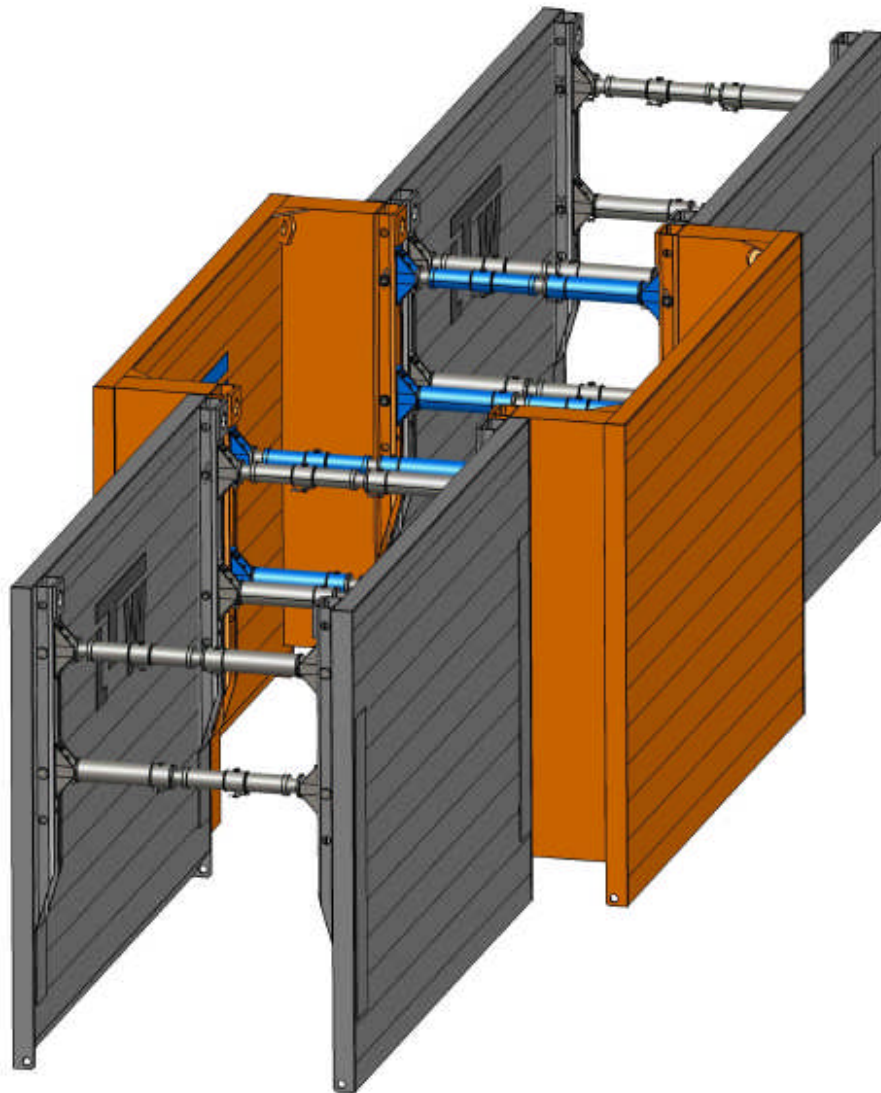


TECHNICAL CHARACTERISTICS

LTW MANHOLE BOX VB 60



Manufacturer: **LTW Tiefbauvertriebs GmbH**
Holter Weg 11
D – 41836 Hückelhoven-Brachelen

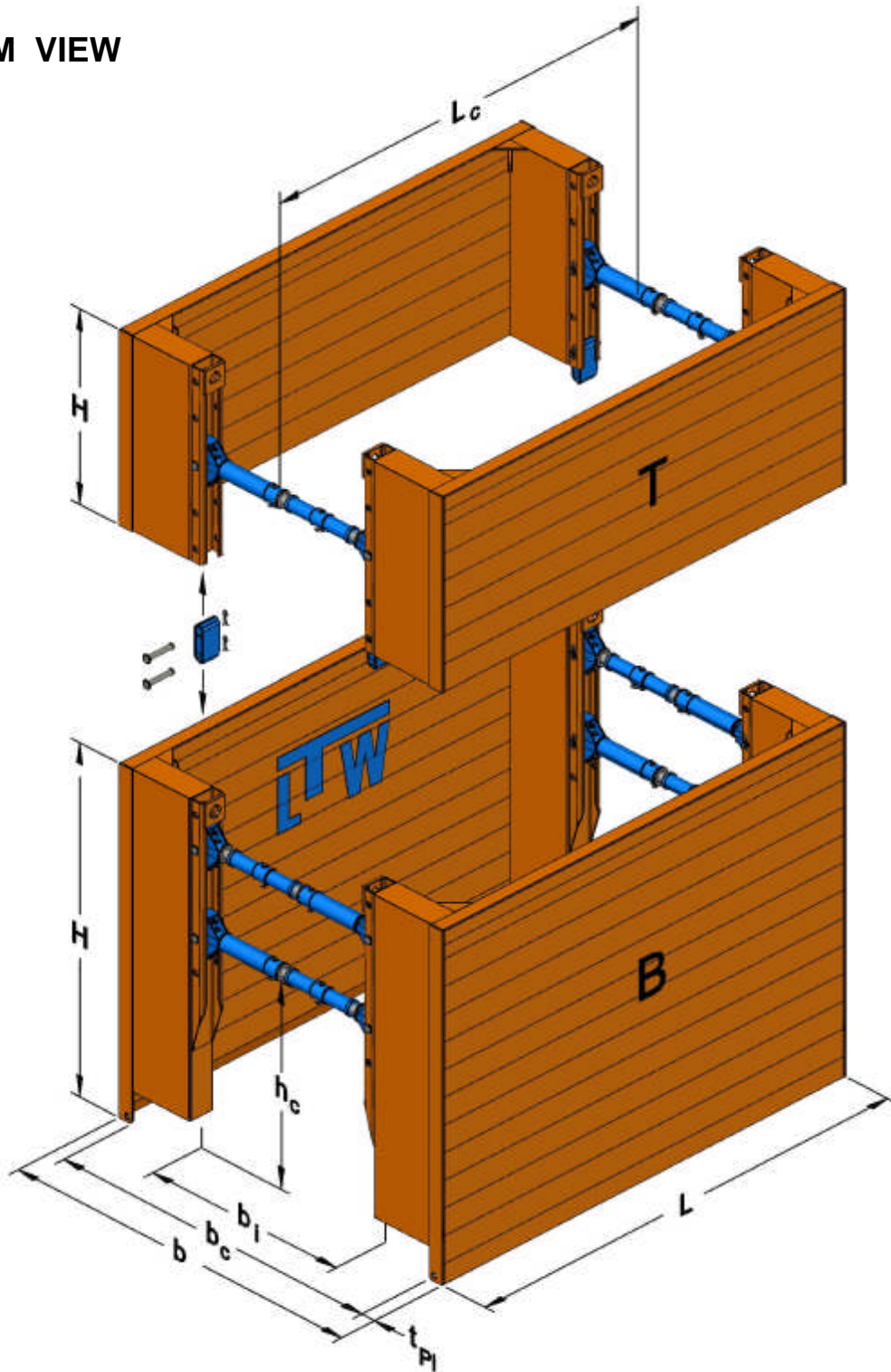
Phone: +49 (0) 24 62 / 2009 0
Fax: +49 (0) 24 62 / 2009 15
e-mail: info@LTW-Verbau.de
homepage: <http://www.LTW-Shoring.com>

TECHNICAL CHARACTERISTICS

LTW MANHOLE BOX VB 60



SYSTEM VIEW



B Base Box
T Top Box
H Plate Height

b Shoring Width
b_c Inner Working Width
t_{Pl} Plate Thickness

h_c Pipe Culvert Height
L Plate Length
L_c Pipe Culvert Length

TECHNICAL CHARACTERISTICS

LTW MANHOLE BOX VB 60



BASE BOXES $t_{PI} = 60 \text{ mm}$

Plate length L [m]	Plate height H [m]	Pipe culvert length L _c [m]	Pipe culvert height h _c [m]	Limit state design load e _d [kN / m ²]	Plate weight G _{PL} [kg]	Box weight G _E [kg]
2,00	2,40	1,58	1,35	66,2	525	1330
2,50	2,40	2,08	1,35	49,8	585	1450
3,00	2,40	2,58	1,35	33,0	645	1580
3,50	2,40	3,08	1,35	32,9	820	1920

TOP BOXES $t_{PI} = 60 \text{ mm}$

Plate length L [m]	Plate height H [m]	Pipe culvert length L _c [m]	Pipe culvert height h _c [m]	Limit state design load e _d [kN / m ²]	Plate weight G _{PL} [kg]	Box weight G _E [kg]
2,00	1,32 1,56	1,58		66,2	340 390	820 920
2,50	1,32 1,56	2,08		49,8	375 430	890 1000
3,00	1,32 1,56	2,58		33,0	410 470	960 1080
3,50	1,32 1,56	3,08		32,9	510 585	1160 1320

TENSILE FORCES

lifting eyes at the plate head $R_d = 229 \text{ kN}$

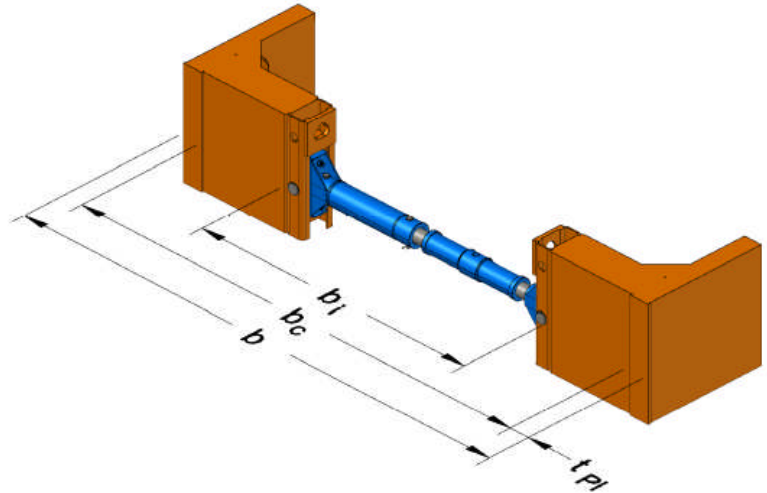
bottom eyes $R_d = 47 \text{ kN}$

TECHNICAL CHARACTERISTICS

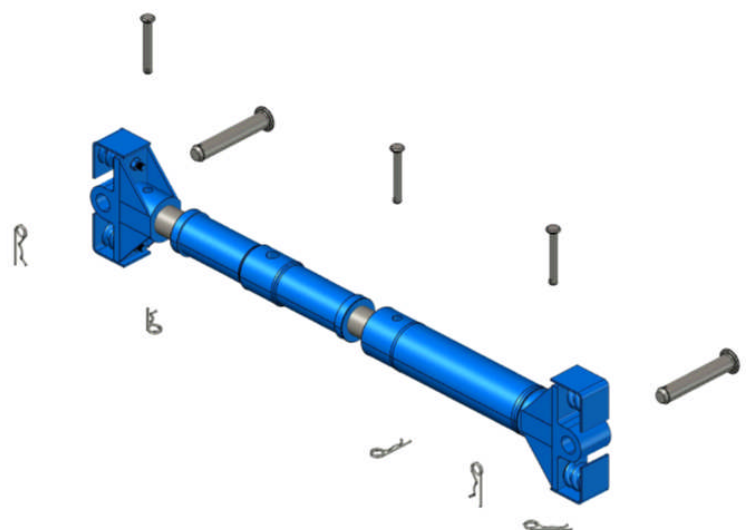
LTW MANHOLE BOX VB 60



STANDARD STRUT



Brace Extension [m]	Working Width between C-Profiles b_i [m]	Working Width between plates b_c [m]	Shoring Width b [m]	Weight G [kg]
<i>ohne</i>	0,99 - 1,29	1,79 - 2,09	1,91 - 2,21	71,0
0,30	1,29 - 1,59	2,09 - 2,39	2,21 - 2,51	15,5
0,50	1,49 - 1,79	2,29 - 2,59	2,41 - 2,71	20,0
0,80	1,79 - 2,09	2,59 - 2,89	2,71 - 3,01	26,7
1,00	1,99 - 2,29	2,79 - 3,09	2,91 - 3,21	31,1
1,50	2,49 - 2,79	3,29 - 3,59	3,41 - 3,71	42,3
2,00	2,99 - 3,29	3,79 - 4,09	3,91 - 4,21	53,4
2,50	3,49 - 3,79	4,29 - 4,59	4,41 - 4,71	64,5



A strut unit consists of two spring mushrooms, the strut and, if required, a brace extension.

spring mushroom
standard Stut
brace extension

bolt $\varnothing 20 \times 148$ with locking clip
bolt $\varnothing 40 \times 226$ with locking clip